

# AVENUE

**MB**  
**W** | RESIDENCES | **MBW CITY**

*RESIDENSI PUNCAK SAUJANA (FASA 2)*

Proposed Serviced Apartments at Lot PTB 24737  
(Sebahagian Lot Asal 4271), Jalan Tun Abdul Razak / Jalan Lingkaran Dalam,  
Bandar Johor Bahru, Daerah Johor Bahru, Johor.

**Developer:**

MBW City Sdn. Bhd. 201901039216 (1348546-V)

*Subsidiary of MB World Group Berhad*



**MB WORLD GROUP**

Note: All renderings, illustrations, photographs, furniture, displayed units, landscape amenities or accessories are shown for illustrative purposes only and do not represent the actual design, physical or structural details of the building and/or denote any legal representations. Plans, specifications, materials, unit numbers, address, name of project and other information contained herein are intended to give a general indication of the proposed design only and are subject to change and/or amendments as may be required or as directed by the relevant authorities/ engineer(s)/ architect. All areas and other measurements are approximate only and subject to final survey and/or SIFUS approval. All statements are believed to be correct but are not to be regarded as representation of facts. Minimum charges for facilities, personnel and equipment may apply. Any models of furniture/ electrical appliances provided are up to the vendor's discretion and do not form part of any contract or warranty. While every reasonable care has been taken in preparing this website/flyer/brochure/publication/banner/poster/video and in constructing the scale models and sales gallery/show unit(s), the Developer and its related companies, representatives, consultants and agents accept no responsibility for any inaccuracies or omissions. The Sale and Purchase Agreement embodies all the terms and conditions between the Developer and the purchasers, and supersedes and cancels all previous representations, warranties, promises, inducements or statements of intention, whether in written, oral or visual made by the Developer and/or its agents which are not embodied in the Sale and Purchase Agreement. Interested persons should rely on their own inquiries.

**CONFIDENTIAL. FOR INTERNAL REFERENCE ONLY. PLEASE DO NOT DISTRIBUTE.**

LAST UPDATED ON 29 OCTOBER 2023 | 0930



All images are for illustration purpose only. Subject to change.

## NEARBY AMENITIES

### TRANSPORTATION

- Future Johor Bahru-Singapore RTS Link
- Johor Causeway
- Johor Bahru Sentral
- Johor Bahru International Ferry Terminal

### NEARBY MEGA PROJECTS

- Ibrahim International Business District (IIBD)
- One Bukit Senyum (OBS)

### SHOPPING

- Johor Bahru City Square
- KOMTAR JBCC
- R&F Mall
- Galleria @ Kotaraya
- Beletime Danga Bay
- The Mall, Mid Valley Southkey
- KSL Mall

### EDUCATION

- SK & SMK Infant Jesus Convent\*
- SJK(C) St. Joseph
- SK St. Joseph\*
- SK Temenggong Abdul Rahman 1\*
- SK Temenggong Abdul Rahman 2
- SK(P) Sultan Ibrahim\*
- SMK(P) Sultan Ibrahim\*
- Foon Yew Primary School II
- Foon Yew High School
- City University of Malaysia - Johor Bahru Campus
- Open University Malaysia (Johor Bahru Campus)

\* Cluster School of Excellence  
(High Performing School)

### LEISURE

- Tunku Mahkota Ismail Youth Centre (TMIYC) Johor Bahru
- Taman Merdeka
- Hutan Bandar MBBJ
- Johor Golf & Country Club
- Bazaar Karat
- Tan Hiok Nee Heritage Street

### HEALTHCARE

- Sultanah Aminah General Hospital
- Maria Hospital
- KPJ Johor Specialist Hospital
- KPJ Puteri Specialist Hospital
- Columbia Asia Hospital - Tebrau

## WELL-CONNECTED TRANSPORT NETWORK



**1** MBW City is strategically located at the intersection of major roads - Jalan Tun Abdul Razak, Inner Ring Road and Jalan Abdul Rahman Andak.

It also has easy access to other major roads such as:

- Jalan Tebrau
- Eastern Dispersal Link (EDL)
- Johor Causeway



**2 Future Johor Bahru-Singapore Rapid Transit System (RTS) Link**

- Connecting Bukit Chagar in Johor Bahru and Woodlands North in Singapore - will be integrated with public transport systems at both stations;
- Capacity of 10,000 passengers per hour per direction;
- Malaysian ICQ and Singaporean CIQ facilities will be co-located within the same building - allowing the entire immigration process of leaving and entering both countries to be completed at the departing station;
- More information: <https://www.mymrt.com.my/public/rts-link/>

**3 Shuttle Bus Service to Johor Bahru CIQ Complex**  
\* Terms and conditions apply

# AVENUE RESIDENCES

<b>Project Name</b>	Avenue Residences [Residensi Puncak Saujana (Fasa 2)]
<b>Developer</b>	MBW City Sdn. Bhd. 201901039216 (1348546-V)
<b>Location</b>	Part of Lot PTB 24737 (Sebahagian Lot Asal 4271), Jalan Tun Abdul Razak/ Jalan Lingkaran Dalam, Johor Bahru, Johor.
<b>Site Area</b>	Approximately 5.65 acres
<b>Land Tenure</b>	Freehold
<b>Components</b>	<ul style="list-style-type: none"> <li>• <b>Tower D:</b> 30-level serviced apartments (449 units)</li> <li>• <b>Tower E:</b> 30-level serviced apartments (449 units)</li> <li>• <b>Tower F:</b> 30-level serviced apartments (449 units)</li> <li>• <b>Tower G:</b> 30-level serviced apartments (449 units)</li> <li>• Podium with 9 levels of car parks, 1 level of commercial space and 1 level of recreational facilities</li> </ul>

Unit Details			Built-up Area		No. of Unit			
Type	Bedroom	Bathroom	sq m	sq ft	Per Floor	Per Tower	Total	
E	1	1	40.39	435	5	149	596	33%
F	2	2	64.79	697	4	120	480	27%
G	3	2	80.17	863	4	120	480	27%
H	3	3	93.04	1,001	2	60	240	13%
<b>Total Units</b>					<b>15</b>	<b>449</b>	<b>1,796</b>	<b>100%</b>

Registered with:



### About GreenRe

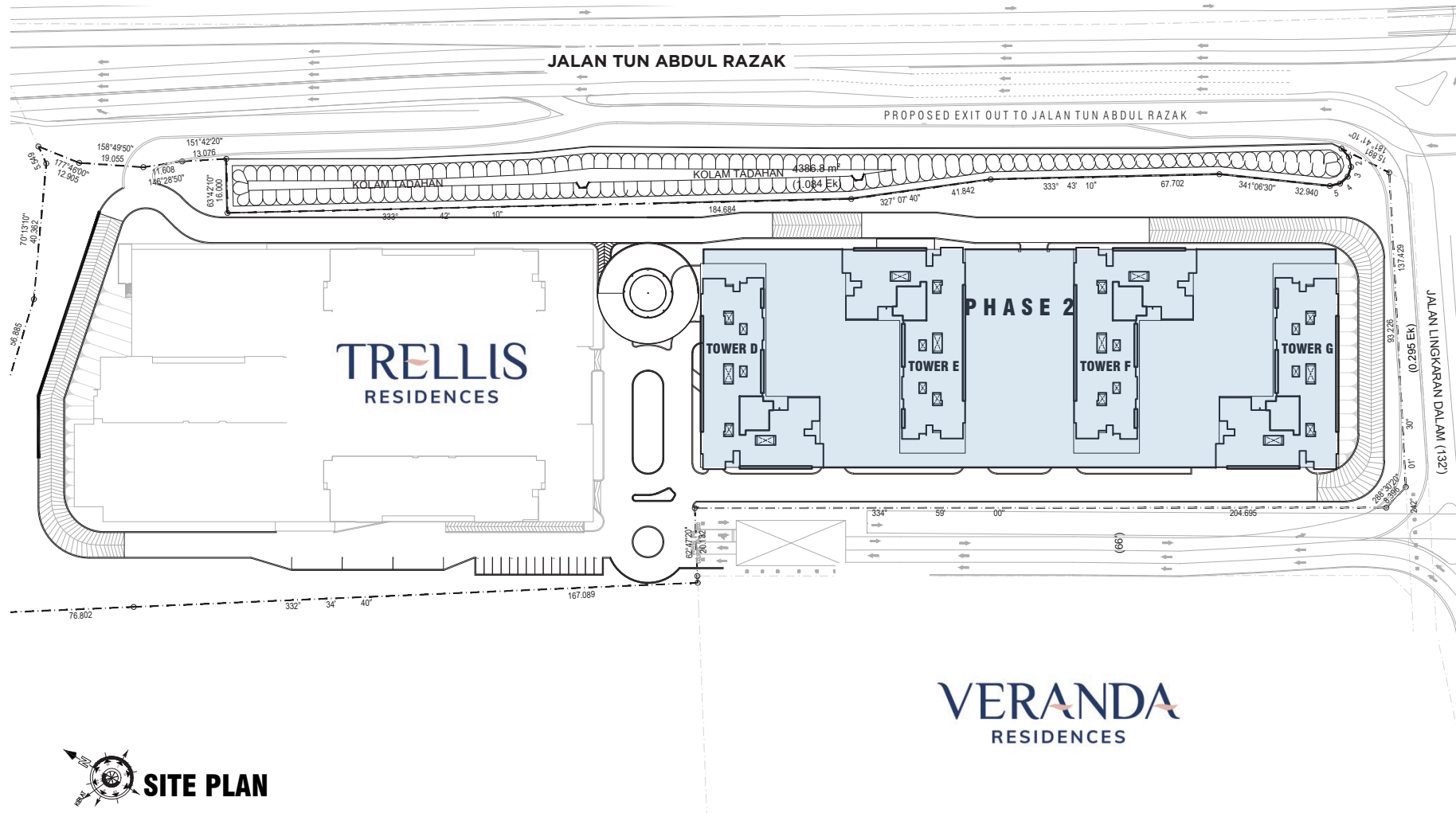
GreenRE were formed by Malaysia's Real Estate and Housing Developers Association (REHDA) in 2013 to promote sustainability in the Malaysia property sector. GreenRE buildings use less energy and water, fewer resources, creates less waste and utilises recycled materials. GreenRE-certified buildings focus on occupant's well-being, offering a healthier indoor space. For more information, visit [www.greenre.org](http://www.greenre.org)



All images are for illustration purpose only. Subject to change.

# SITE PLAN

Subject to change and/or amendments as may be required or as directed by the relevant authorities/ engineer(s)/ architect.



 **SITE PLAN**

**NOTE:** Not to scale. Exterior areas may vary to suit site conditions. Unit numbers, plans, layouts and other information contained herein are intended to give a general indication of the proposed design only and are subject to change and/or amendments as may be required or as directed by the relevant authorities/engineer(s)/ architect.

UPDATED 27 OCTOBER 2023.

# FACILITY

All images are for illustration purpose only. Subject to change.



- |                     |                            |                |                 |
|---------------------|----------------------------|----------------|-----------------|
| 1 Multipurpose Hall | 5 Kids Playroom            | 8 Herbs Garden | A Jacuzzi       |
| 2 Function Room     | 6 Playground & Outdoor Gym | 9 Event Space  | B Swimming Pool |
| 3 Gymnasium         | 7 BBQ Pit                  | 10 Sauna       | C Kids Pool     |
| 4 Party Terrace     |                            |                | D Games Room    |

**NOTE:** Not to scale. Exterior areas may vary to suit site conditions. Unit numbers, plans, layouts and other information contained herein are intended to give a general indication of the proposed design only and are subject to change and/or amendments as may be required or as directed by the relevant authorities/engineer(s)/ architect.

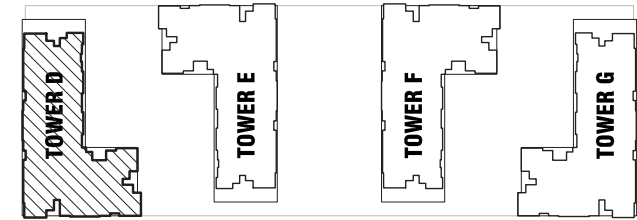
**CONFIDENTIAL. FOR INTERNAL REFERENCE ONLY. PLEASE DO NOT DISTRIBUTE.**

LAST UPDATED ON 29 OCTOBER 2023 | 0930

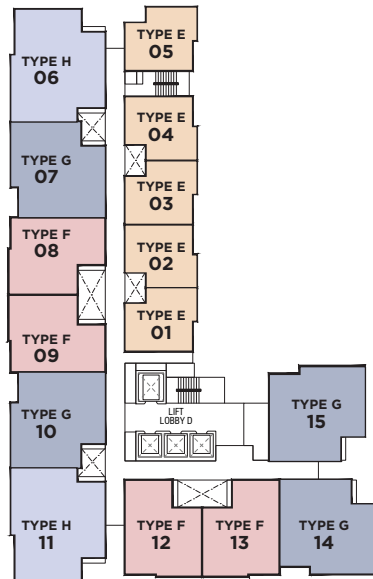
# TYPICAL FLOOR PLAN

**NOTE:**

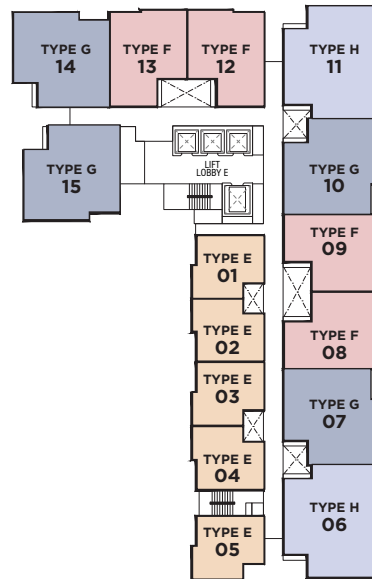
1. Not to scale.
2. Exterior areas may vary to suit site conditions.
3. The unit number is an indicative number only and does not represent the house actual numbering in the actual address.
4. Unit numbers, plans, layouts and other information contained herein are intended to give a general indication of the proposed design only and are subject to change and/or amendments as may be required or as directed by the relevant authorities/engineer(s)/ architect.



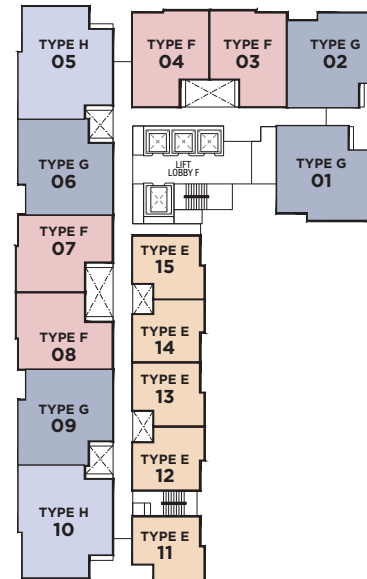
**TOWER D**



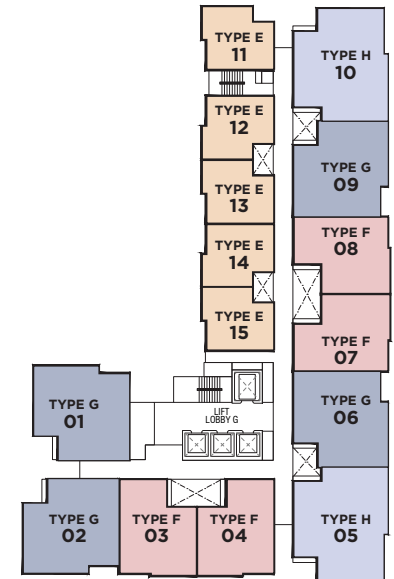
**TOWER E**



**TOWER F**



**TOWER G**



# STOREY PLAN

## TOWER D

TOWER D																	
▼36TH FLOOR	# 36-12 TYPE F	# 36-13 TYPE F	# 36-14 TYPE G	# 36-15 TYPE G	# 36-01 TYPE E	# 36-02 TYPE E	# 36-03 TYPE E	# 36-04 TYPE E	# 36-05 TYPE E	# 36-06 TYPE H	# 36-07 TYPE G	# 36-08 TYPE F	# 36-09 TYPE F	# 36-10 TYPE G	# 36-11 TYPE H	15	
▼35TH FLOOR	# 35-12 TYPE F	# 35-13 TYPE F	# 35-14 TYPE G	# 35-15 TYPE G	# 35-01 TYPE E	# 35-02 TYPE E	# 35-03 TYPE E	# 35-04 TYPE E	# 35-05 TYPE E	# 35-06 TYPE H	# 35-07 TYPE G	# 35-08 TYPE F	# 35-09 TYPE F	# 35-10 TYPE G	# 35-11 TYPE H	15	
▼34TH FLOOR	# 34-12 TYPE F	# 34-13 TYPE F	# 34-14 TYPE G	# 34-15 TYPE G	# 34-01 TYPE E	# 34-02 TYPE E	# 34-03 TYPE E	# 34-04 TYPE E	# 34-05 TYPE E	# 34-06 TYPE H	# 34-07 TYPE G	# 34-08 TYPE F	# 34-09 TYPE F	# 34-10 TYPE G	# 34-11 TYPE H	15	
▼33RD FLOOR	# 33-12 TYPE F	# 33-13 TYPE F	# 33-14 TYPE G	# 33-15 TYPE G	# 33-01 TYPE E	# 33-02 TYPE E	# 33-03 TYPE E	# 33-04 TYPE E	# 33-05 TYPE E	# 33-06 TYPE H	# 33-07 TYPE G	# 33-08 TYPE F	# 33-09 TYPE F	# 33-10 TYPE G	# 33-11 TYPE H	15	
▼32ND FLOOR	# 32-12 TYPE F	# 32-13 TYPE F	# 32-14 TYPE G	# 32-15 TYPE G	# 32-01 TYPE E	# 32-02 TYPE E	# 32-03 TYPE E	# 32-04 TYPE E	# 32-05 TYPE E	# 32-06 TYPE H	# 32-07 TYPE G	# 32-08 TYPE F	# 32-09 TYPE F	# 32-10 TYPE G	# 32-11 TYPE H	15	
▼31ST FLOOR	# 31-12 TYPE F	# 31-13 TYPE F	# 31-14 TYPE G	# 31-15 TYPE G	# 31-01 TYPE E	# 31-02 TYPE E	# 31-03 TYPE E	# 31-04 TYPE E	# 31-05 TYPE E	# 31-06 TYPE H	# 31-07 TYPE G	# 31-08 TYPE F	# 31-09 TYPE F	# 31-10 TYPE G	# 31-11 TYPE H	15	
▼30TH FLOOR	# 30-12 TYPE F	# 30-13 TYPE F	# 30-14 TYPE G	# 30-15 TYPE G	# 30-01 TYPE E	# 30-02 TYPE E	# 30-03 TYPE E	# 30-04 TYPE E	# 30-05 TYPE E	# 30-06 TYPE H	# 30-07 TYPE G	# 30-08 TYPE F	# 30-09 TYPE F	# 30-10 TYPE G	# 30-11 TYPE H	15	
▼29TH FLOOR	# 29-12 TYPE F	# 29-13 TYPE F	# 29-14 TYPE G	# 29-15 TYPE G	# 29-01 TYPE E	# 29-02 TYPE E	# 29-03 TYPE E	# 29-04 TYPE E	# 29-05 TYPE E	# 29-06 TYPE H	# 29-07 TYPE G	# 29-08 TYPE F	# 29-09 TYPE F	# 29-10 TYPE G	# 29-11 TYPE H	15	
▼28TH FLOOR	# 28-12 TYPE F	# 28-13 TYPE F	# 28-14 TYPE G	# 28-15 TYPE G	# 28-01 TYPE E	# 28-02 TYPE E	# 28-03 TYPE E	# 28-04 TYPE E	# 28-05 TYPE E	# 28-06 TYPE H	# 28-07 TYPE G	# 28-08 TYPE F	# 28-09 TYPE F	# 28-10 TYPE G	# 28-11 TYPE H	15	
▼27TH FLOOR	# 27-12 TYPE F	# 27-13 TYPE F	# 27-14 TYPE G	# 27-15 TYPE G	# 27-01 TYPE E	# 27-02 TYPE E	# 27-03 TYPE E	# 27-04 TYPE E	# 27-05 TYPE E	# 27-06 TYPE H	# 27-07 TYPE G	# 27-08 TYPE F	# 27-09 TYPE F	# 27-10 TYPE G	# 27-11 TYPE H	15	
▼26TH FLOOR	# 26-12 TYPE F	# 26-13 TYPE F	# 26-14 TYPE G	# 26-15 TYPE G	# 26-01 TYPE E	# 26-02 TYPE E	# 26-03 TYPE E	# 26-04 TYPE E	# 26-05 TYPE E	# 26-06 TYPE H	# 26-07 TYPE G	# 26-08 TYPE F	# 26-09 TYPE F	# 26-10 TYPE G	# 26-11 TYPE H	15	
▼25TH FLOOR	# 25-12 TYPE F	# 25-13 TYPE F	# 25-14 TYPE G	# 25-15 TYPE G	# 25-01 TYPE E	# 25-02 TYPE E	# 25-03 TYPE E	# 25-04 TYPE E	# 25-05 TYPE E	# 25-06 TYPE H	# 25-07 TYPE G	# 25-08 TYPE F	# 25-09 TYPE F	# 25-10 TYPE G	# 25-11 TYPE H	15	
▼24TH FLOOR	# 24-12 TYPE F	# 24-13 TYPE F	# 24-14 TYPE G	# 24-15 TYPE G	# 24-01 TYPE E	# 24-02 TYPE E	# 24-03 TYPE E	# 24-04 TYPE E	# 24-05 TYPE E	# 24-06 TYPE H	# 24-07 TYPE G	# 24-08 TYPE F	# 24-09 TYPE F	# 24-10 TYPE G	# 24-11 TYPE H	15	
▼33RD FLOOR	# 23-12 TYPE F	# 23-13 TYPE F	# 23-14 TYPE G	# 23-15 TYPE G	# 23-01 TYPE E	# 23-02 TYPE E	# 23-03 TYPE E	# 23-04 TYPE E	# 23-05 TYPE E	# 23-06 TYPE H	# 23-07 TYPE G	# 23-08 TYPE F	# 23-09 TYPE F	# 23-10 TYPE G	# 23-11 TYPE H	15	
▼32ND FLOOR	# 22-12 TYPE F	# 22-13 TYPE F	# 22-14 TYPE G	# 22-15 TYPE G	# 22-01 TYPE E	# 22-02 TYPE E	# 22-03 TYPE E	# 22-04 TYPE E	# 22-05 TYPE E	# 22-06 TYPE H	# 22-07 TYPE G	# 22-08 TYPE F	# 22-09 TYPE F	# 22-10 TYPE G	# 22-11 TYPE H	15	
▼21ST FLOOR	# 21-12 TYPE F	# 21-13 TYPE F	# 21-14 TYPE G	# 21-15 TYPE G	# 21-01 TYPE E	# 21-02 TYPE E	# 21-03 TYPE E	# 21-04 TYPE E	# 21-05 TYPE E	# 21-06 TYPE H	# 21-07 TYPE G	# 21-08 TYPE F	# 21-09 TYPE F	# 21-10 TYPE G	# 21-11 TYPE H	15	
▼20TH FLOOR	# 20-12 TYPE F	# 20-13 TYPE F	# 20-14 TYPE G	# 20-15 TYPE G	# 20-01 TYPE E	# 20-02 TYPE E	# 20-03 TYPE E	# 20-04 TYPE E	# 20-05 TYPE E	# 20-06 TYPE H	# 20-07 TYPE G	# 20-08 TYPE F	# 20-09 TYPE F	# 20-10 TYPE G	# 20-11 TYPE H	15	
▼19TH FLOOR	# 19-12 TYPE F	# 19-13 TYPE F	# 19-14 TYPE G	# 19-15 TYPE G	# 19-01 TYPE E	# 19-02 TYPE E	# 19-03 TYPE E	# 19-04 TYPE E	# 19-05 TYPE E	# 19-06 TYPE H	# 19-07 TYPE G	# 19-08 TYPE F	# 19-09 TYPE F	# 19-10 TYPE G	# 19-11 TYPE H	15	
▼18TH FLOOR	# 18-12 TYPE F	# 18-13 TYPE F	# 18-14 TYPE G	# 18-15 TYPE G	# 18-01 TYPE E	# 18-02 TYPE E	# 18-03 TYPE E	# 18-04 TYPE E	# 18-05 TYPE E	# 18-06 TYPE H	# 18-07 TYPE G	# 18-08 TYPE F	# 18-09 TYPE F	# 18-10 TYPE G	# 18-11 TYPE H	15	
▼17TH FLOOR	# 17-12 TYPE F	# 17-13 TYPE F	# 17-14 TYPE G	# 17-15 TYPE G	# 17-01 TYPE E	# 17-02 TYPE E	# 17-03 TYPE E	# 17-04 TYPE E	# 17-05 TYPE E	# 17-06 TYPE H	# 17-07 TYPE G	# 17-08 TYPE F	# 17-09 TYPE F	# 17-10 TYPE G	# 17-11 TYPE H	15	
▼16TH FLOOR	# 16-12 TYPE F	# 16-13 TYPE F	# 16-14 TYPE G	# 16-15 TYPE G	# 16-01 TYPE E	# 16-02 TYPE E	# 16-03 TYPE E	# 16-04 TYPE E	# 16-05 TYPE E	# 16-06 TYPE H	# 16-07 TYPE G	# 16-08 TYPE F	# 16-09 TYPE F	# 16-10 TYPE G	# 16-11 TYPE H	15	
▼15TH FLOOR	# 15-12 TYPE F	# 15-13 TYPE F	# 15-14 TYPE G	# 15-15 TYPE G	# 15-01 TYPE E	# 15-02 TYPE E	# 15-03 TYPE E	# 15-04 TYPE E	# 15-05 TYPE E	# 15-06 TYPE H	# 15-07 TYPE G	# 15-08 TYPE F	# 15-09 TYPE F	# 15-10 TYPE G	# 15-11 TYPE H	15	
▼14TH FLOOR	# 14-12 TYPE F	# 14-13 TYPE F	# 14-14 TYPE G	# 14-15 TYPE G	# 14-01 TYPE E	# 14-02 TYPE E	# 14-03 TYPE E	# 14-04 TYPE E	# 14-05 TYPE E	# 14-06 TYPE H	# 14-07 TYPE G	# 14-08 TYPE F	# 14-09 TYPE F	# 14-10 TYPE G	# 14-11 TYPE H	15	
▼13TH FLOOR	# 13-12 TYPE F	# 13-13 TYPE F	# 13-14 TYPE G	# 13-15 TYPE G	# 13-01 TYPE E	# 13-02 TYPE E	# 13-03 TYPE E	# 13-04 TYPE E	# 13-05 TYPE E	# 13-06 TYPE H	# 13-07 TYPE G	# 13-08 TYPE F	# 13-09 TYPE F	# 13-10 TYPE G	# 13-11 TYPE H	15	
▼12TH FLOOR	# 12-12 TYPE F	# 12-13 TYPE F	# 12-14 TYPE G	# 12-15 TYPE G	# 12-01 TYPE E	# 12-02 TYPE E	# 12-03 TYPE E	# 12-04 TYPE E	# 12-05 TYPE E	# 12-06 TYPE H	# 12-07 TYPE G	# 12-08 TYPE F	# 12-09 TYPE F	# 12-10 TYPE G	# 12-11 TYPE H	15	
▼11TH FLOOR	# 11-12 TYPE F	# 11-13 TYPE F	# 11-14 TYPE G	# 11-15 TYPE G	# 11-01 TYPE E	# 11-02 TYPE E	# 11-03 TYPE E	# 11-04 TYPE E	# 11-05 TYPE E	# 11-06 TYPE H	# 11-07 TYPE G	# 11-08 TYPE F	# 11-09 TYPE F	# 11-10 TYPE G	# 11-11 TYPE H	15	
▼10TH FLOOR	# 10-12 TYPE F	# 10-13 TYPE F	# 10-14 TYPE G	# 10-15 TYPE G	# 10-01 TYPE E	# 10-02 TYPE E	# 10-03 TYPE E	# 10-04 TYPE E	# 10-05 TYPE E	# 10-06 TYPE H	# 10-07 TYPE G	# 10-08 TYPE F	# 10-09 TYPE F	# 10-10 TYPE G	# 10-11 TYPE H	15	
▼9TH FLOOR	# 09-12 TYPE F	# 09-13 TYPE F	# 09-14 TYPE G	# 09-15 TYPE G	# 09-01 TYPE E	# 09-02 TYPE E	# 09-03 TYPE E	# 09-04 TYPE E	# 09-05 TYPE E	# 09-06 TYPE H	# 09-07 TYPE G	# 09-08 TYPE F	# 09-09 TYPE F	# 09-10 TYPE G	# 09-11 TYPE H	15	
▼8TH FLOOR	# 08-11 TYPE F	# 08-12 TYPE F	# 08-13 TYPE G	# 08-14 TYPE G	M&E ROOM	# 08-01 TYPE E	# 08-02 TYPE E	# 08-03 TYPE E	# 08-04 TYPE E	# 08-05 TYPE H	# 08-06 TYPE G	# 08-07 TYPE F	# 08-08 TYPE F	# 08-09 TYPE G	# 08-10 TYPE H	14	
▼7TH FLOOR	# 07-12 TYPE F	# 07-13 TYPE F	# 07-14 TYPE G	# 07-15 TYPE G	# 07-01 TYPE E	# 07-02 TYPE E	# 07-03 TYPE E	# 07-04 TYPE E	# 07-05 TYPE E	# 07-06 TYPE H	# 07-07 TYPE G	# 07-08 TYPE F	# 07-09 TYPE F	# 07-10 TYPE G	# 07-11 TYPE H	15	
▼TRANSFER BEAM																	
▼36TH FLOOR (FACILITIES)	FACILITIES				FACILITIES												
▼PODIUM	FACILITIES				FACILITIES												
▼35TH FLOOR	CAR PARK				CAR PARK												
▼34TH FLOOR	CAR PARK				CAR PARK												
▼33RD FLOOR	CAR PARK				CAR PARK												
▼32ND FLOOR	CAR PARK				CAR PARK												
▼31ST FLOOR	CAR PARK				CAR PARK												
▼GROUND FLOOR	COMMERCIAL				COMMERCIAL												
▼LOWER GROUND 1	CAR PARK				CAR PARK												
▼LOWER GROUND 2	CAR PARK				CAR PARK												
▼LOWER GROUND 3	CAR PARK				CAR PARK												
▼LOWER GROUND 4	CAR PARK				CAR PARK												

**NOTE:**

- Not to scale.
- The unit number is an indicative number only and does not represent the house numbering in the actual address.
- Unit numbers, plans, layouts and other information contained herein are intended to give a general indication of the proposed design only and are subject to change and/or amendments as may be required or as directed by the relevant authorities/engineer(s)/ architect.

**TOWER E**

TOWER E																	
18TH FLOOR	# 36-12 TYPE F	# 36-13 TYPE F	# 36-14 TYPE G	# 36-15 TYPE G	# 36-01 TYPE E	# 36-02 TYPE E	# 36-03 TYPE E	# 36-04 TYPE E	# 36-05 TYPE E	# 36-06 TYPE E	# 36-07 TYPE E	# 36-08 TYPE F	# 36-09 TYPE F	# 36-10 TYPE G	# 36-11 TYPE H	15	
18TH FLOOR	# 35-12 TYPE F	# 35-13 TYPE F	# 35-14 TYPE G	# 35-15 TYPE G	# 35-01 TYPE E	# 35-02 TYPE E	# 35-03 TYPE E	# 35-04 TYPE E	# 35-05 TYPE E	# 35-06 TYPE H	# 35-07 TYPE F	# 35-08 TYPE F	# 35-09 TYPE F	# 35-10 TYPE G	# 35-11 TYPE H	15	
14TH FLOOR	# 34-12 TYPE F	# 34-13 TYPE F	# 34-14 TYPE G	# 34-15 TYPE G	# 34-01 TYPE E	# 34-02 TYPE E	# 34-03 TYPE E	# 34-04 TYPE E	# 34-05 TYPE E	# 34-06 TYPE H	# 34-07 TYPE F	# 34-08 TYPE F	# 34-09 TYPE F	# 34-10 TYPE G	# 34-11 TYPE H	15	
13RD FLOOR	# 33-12 TYPE F	# 33-13 TYPE F	# 33-14 TYPE G	# 33-15 TYPE G	# 33-01 TYPE E	# 33-02 TYPE E	# 33-03 TYPE E	# 33-04 TYPE E	# 33-05 TYPE E	# 33-06 TYPE H	# 33-07 TYPE F	# 33-08 TYPE F	# 33-09 TYPE F	# 33-10 TYPE G	# 33-11 TYPE H	15	
12ND FLOOR	# 32-12 TYPE F	# 32-13 TYPE F	# 32-14 TYPE G	# 32-15 TYPE G	# 32-01 TYPE E	# 32-02 TYPE E	# 32-03 TYPE E	# 32-04 TYPE E	# 32-05 TYPE E	# 32-06 TYPE H	# 32-07 TYPE F	# 32-08 TYPE F	# 32-09 TYPE F	# 32-10 TYPE G	# 32-11 TYPE H	15	
11ST FLOOR	# 31-12 TYPE F	# 31-13 TYPE F	# 31-14 TYPE G	# 31-15 TYPE G	# 31-01 TYPE E	# 31-02 TYPE E	# 31-03 TYPE E	# 31-04 TYPE E	# 31-05 TYPE E	# 31-06 TYPE H	# 31-07 TYPE F	# 31-08 TYPE F	# 31-09 TYPE F	# 31-10 TYPE G	# 31-11 TYPE H	15	
10TH FLOOR	# 30-12 TYPE F	# 30-13 TYPE F	# 30-14 TYPE G	# 30-15 TYPE G	# 30-01 TYPE E	# 30-02 TYPE E	# 30-03 TYPE E	# 30-04 TYPE E	# 30-05 TYPE E	# 30-06 TYPE H	# 30-07 TYPE F	# 30-08 TYPE F	# 30-09 TYPE F	# 30-10 TYPE G	# 30-11 TYPE H	15	
9TH FLOOR	# 29-12 TYPE F	# 29-13 TYPE F	# 29-14 TYPE G	# 29-15 TYPE G	# 29-01 TYPE E	# 29-02 TYPE E	# 29-03 TYPE E	# 29-04 TYPE E	# 29-05 TYPE E	# 29-06 TYPE H	# 29-07 TYPE F	# 29-08 TYPE F	# 29-09 TYPE F	# 29-10 TYPE G	# 29-11 TYPE H	15	
8TH FLOOR	# 28-12 TYPE F	# 28-13 TYPE F	# 28-14 TYPE G	# 28-15 TYPE G	# 28-01 TYPE E	# 28-02 TYPE E	# 28-03 TYPE E	# 28-04 TYPE E	# 28-05 TYPE E	# 28-06 TYPE H	# 28-07 TYPE F	# 28-08 TYPE F	# 28-09 TYPE F	# 28-10 TYPE G	# 28-11 TYPE H	15	
7TH FLOOR	# 27-12 TYPE F	# 27-13 TYPE F	# 27-14 TYPE G	# 27-15 TYPE G	# 27-01 TYPE E	# 27-02 TYPE E	# 27-03 TYPE E	# 27-04 TYPE E	# 27-05 TYPE E	# 27-06 TYPE H	# 27-07 TYPE F	# 27-08 TYPE F	# 27-09 TYPE F	# 27-10 TYPE G	# 27-11 TYPE H	15	
6TH FLOOR	# 26-12 TYPE F	# 26-13 TYPE F	# 26-14 TYPE G	# 26-15 TYPE G	# 26-01 TYPE E	# 26-02 TYPE E	# 26-03 TYPE E	# 26-04 TYPE E	# 26-05 TYPE E	# 26-06 TYPE H	# 26-07 TYPE F	# 26-08 TYPE F	# 26-09 TYPE F	# 26-10 TYPE G	# 26-11 TYPE H	15	
5TH FLOOR	# 25-12 TYPE F	# 25-13 TYPE F	# 25-14 TYPE G	# 25-15 TYPE G	# 25-01 TYPE E	# 25-02 TYPE E	# 25-03 TYPE E	# 25-04 TYPE E	# 25-05 TYPE E	# 25-06 TYPE H	# 25-07 TYPE F	# 25-08 TYPE F	# 25-09 TYPE F	# 25-10 TYPE G	# 25-11 TYPE H	15	
4TH FLOOR	# 24-12 TYPE F	# 24-13 TYPE F	# 24-14 TYPE G	# 24-15 TYPE G	# 24-01 TYPE E	# 24-02 TYPE E	# 24-03 TYPE E	# 24-04 TYPE E	# 24-05 TYPE E	# 24-06 TYPE H	# 24-07 TYPE F	# 24-08 TYPE F	# 24-09 TYPE F	# 24-10 TYPE G	# 24-11 TYPE H	15	
3RD FLOOR	# 23-12 TYPE F	# 23-13 TYPE F	# 23-14 TYPE G	# 23-15 TYPE G	# 23-01 TYPE E	# 23-02 TYPE E	# 23-03 TYPE E	# 23-04 TYPE E	# 23-05 TYPE E	# 23-06 TYPE H	# 23-07 TYPE F	# 23-08 TYPE F	# 23-09 TYPE F	# 23-10 TYPE G	# 23-11 TYPE H	15	
2ND FLOOR	# 22-12 TYPE F	# 22-13 TYPE F	# 22-14 TYPE G	# 22-15 TYPE G	# 22-01 TYPE E	# 22-02 TYPE E	# 22-03 TYPE E	# 22-04 TYPE E	# 22-05 TYPE E	# 22-06 TYPE H	# 22-07 TYPE F	# 22-08 TYPE F	# 22-09 TYPE F	# 22-10 TYPE G	# 22-11 TYPE H	15	
1ST FLOOR	# 21-12 TYPE F	# 21-13 TYPE F	# 21-14 TYPE G	# 21-15 TYPE G	# 21-01 TYPE E	# 21-02 TYPE E	# 21-03 TYPE E	# 21-04 TYPE E	# 21-05 TYPE E	# 21-06 TYPE H	# 21-07 TYPE F	# 21-08 TYPE F	# 21-09 TYPE F	# 21-10 TYPE G	# 21-11 TYPE H	15	
18TH FLOOR	# 20-12 TYPE F	# 20-13 TYPE F	# 20-14 TYPE G	# 20-15 TYPE G	# 20-01 TYPE E	# 20-02 TYPE E	# 20-03 TYPE E	# 20-04 TYPE E	# 20-05 TYPE E	# 20-06 TYPE H	# 20-07 TYPE F	# 20-08 TYPE F	# 20-09 TYPE F	# 20-10 TYPE G	# 20-11 TYPE H	15	
19TH FLOOR	# 19-12 TYPE F	# 19-13 TYPE F	# 19-14 TYPE G	# 19-15 TYPE G	# 19-01 TYPE E	# 19-02 TYPE E	# 19-03 TYPE E	# 19-04 TYPE E	# 19-05 TYPE E	# 19-06 TYPE H	# 19-07 TYPE F	# 19-08 TYPE F	# 19-09 TYPE F	# 19-10 TYPE G	# 19-11 TYPE H	15	
18TH FLOOR	# 18-12 TYPE F	# 18-13 TYPE F	# 18-14 TYPE G	# 18-15 TYPE G	# 18-01 TYPE E	# 18-02 TYPE E	# 18-03 TYPE E	# 18-04 TYPE E	# 18-05 TYPE E	# 18-06 TYPE H	# 18-07 TYPE F	# 18-08 TYPE F	# 18-09 TYPE F	# 18-10 TYPE G	# 18-11 TYPE H	15	
17TH FLOOR	# 17-12 TYPE F	# 17-13 TYPE F	# 17-14 TYPE G	# 17-15 TYPE G	# 17-01 TYPE E	# 17-02 TYPE E	# 17-03 TYPE E	# 17-04 TYPE E	# 17-05 TYPE E	# 17-06 TYPE H	# 17-07 TYPE F	# 17-08 TYPE F	# 17-09 TYPE F	# 17-10 TYPE G	# 17-11 TYPE H	15	
16TH FLOOR	# 16-12 TYPE F	# 16-13 TYPE F	# 16-14 TYPE G	# 16-15 TYPE G	# 16-01 TYPE E	# 16-02 TYPE E	# 16-03 TYPE E	# 16-04 TYPE E	# 16-05 TYPE E	# 16-06 TYPE H	# 16-07 TYPE F	# 16-08 TYPE F	# 16-09 TYPE F	# 16-10 TYPE G	# 16-11 TYPE H	15	
15TH FLOOR	# 15-12 TYPE F	# 15-13 TYPE F	# 15-14 TYPE G	# 15-15 TYPE G	# 15-01 TYPE E	# 15-02 TYPE E	# 15-03 TYPE E	# 15-04 TYPE E	# 15-05 TYPE E	# 15-06 TYPE H	# 15-07 TYPE F	# 15-08 TYPE F	# 15-09 TYPE F	# 15-10 TYPE G	# 15-11 TYPE H	15	
14TH FLOOR	# 14-12 TYPE F	# 14-13 TYPE F	# 14-14 TYPE G	# 14-15 TYPE G	# 14-01 TYPE E	# 14-02 TYPE E	# 14-03 TYPE E	# 14-04 TYPE E	# 14-05 TYPE E	# 14-06 TYPE H	# 14-07 TYPE F	# 14-08 TYPE F	# 14-09 TYPE F	# 14-10 TYPE G	# 14-11 TYPE H	15	
13TH FLOOR	# 13-12 TYPE F	# 13-13 TYPE F	# 13-14 TYPE G	# 13-15 TYPE G	# 13-01 TYPE E	# 13-02 TYPE E	# 13-03 TYPE E	# 13-04 TYPE E	# 13-05 TYPE E	# 13-06 TYPE H	# 13-07 TYPE F	# 13-08 TYPE F	# 13-09 TYPE F	# 13-10 TYPE G	# 13-11 TYPE H	15	
12TH FLOOR	# 12-12 TYPE F	# 12-13 TYPE F	# 12-14 TYPE G	# 12-15 TYPE G	# 12-01 TYPE E	# 12-02 TYPE E	# 12-03 TYPE E	# 12-04 TYPE E	# 12-05 TYPE E	# 12-06 TYPE H	# 12-07 TYPE F	# 12-08 TYPE F	# 12-09 TYPE F	# 12-10 TYPE G	# 12-11 TYPE H	15	
11TH FLOOR	# 11-12 TYPE F	# 11-13 TYPE F	# 11-14 TYPE G	# 11-15 TYPE G	# 11-01 TYPE E	# 11-02 TYPE E	# 11-03 TYPE E	# 11-04 TYPE E	# 11-05 TYPE E	# 11-06 TYPE H	# 11-07 TYPE F	# 11-08 TYPE F	# 11-09 TYPE F	# 11-10 TYPE G	# 11-11 TYPE H	15	
10TH FLOOR	# 10-12 TYPE F	# 10-13 TYPE F	# 10-14 TYPE G	# 10-15 TYPE G	# 10-01 TYPE E	# 10-02 TYPE E	# 10-03 TYPE E	# 10-04 TYPE E	# 10-05 TYPE E	# 10-06 TYPE H	# 10-07 TYPE F	# 10-08 TYPE F	# 10-09 TYPE F	# 10-10 TYPE G	# 10-11 TYPE H	15	
9TH FLOOR	# 09-12 TYPE F	# 09-13 TYPE F	# 09-14 TYPE G	# 09-15 TYPE G	# 09-01 TYPE E	# 09-02 TYPE E	# 09-03 TYPE E	# 09-04 TYPE E	# 09-05 TYPE E	# 09-06 TYPE H	# 09-07 TYPE F	# 09-08 TYPE F	# 09-09 TYPE F	# 09-10 TYPE G	# 09-11 TYPE H	15	
8TH FLOOR	# 08-11 TYPE F	# 08-12 TYPE F	# 08-13 TYPE G	# 08-14 TYPE G	N/A	# 08-01 TYPE E	# 08-02 TYPE E	# 08-03 TYPE E	# 08-04 TYPE E	# 08-05 TYPE H	# 08-06 TYPE F	# 08-07 TYPE F	# 08-08 TYPE F	# 08-09 TYPE G	# 08-10 TYPE H	14	
7TH FLOOR	# 07-12 TYPE F	# 07-13 TYPE F	# 07-14 TYPE G	# 07-15 TYPE G	# 07-01 TYPE E	# 07-02 TYPE E	# 07-03 TYPE E	# 07-04 TYPE E	# 07-05 TYPE E	# 07-06 TYPE H	# 07-07 TYPE F	# 07-08 TYPE F	# 07-09 TYPE F	# 07-10 TYPE G	# 07-11 TYPE H	15	
TRANSFER BEAM																-	
6TH FLOOR (FACILITIES) (PODIUM)	FACILITIES				FACILITIES												-
5TH FLOOR	CAR PARK				CAR PARK												-
4TH FLOOR	CAR PARK				CAR PARK												-
3RD FLOOR	CAR PARK				CAR PARK												-
2ND FLOOR	CAR PARK				CAR PARK												-
1ST FLOOR	CAR PARK				CAR PARK												-
GROUND FLOOR	COMMERCIAL				COMMERCIAL												-
LOWER GROUND 1	CAR PARK				CAR PARK												-
LOWER GROUND 2	CAR PARK				CAR PARK												-
LOWER GROUND 3	CAR PARK				CAR PARK												-
LOWER GROUND 4	CAR PARK				CAR PARK												-
Jumlah Unit																449	

**NOTE:**

- Not to scale.
- The unit number is an indicative number only and does not represent the house numbering in the actual address.
- Unit numbers, plans, layouts and other information contained herein are intended to give a general indication of the proposed design only and are subject to change and/or amendments as may be required or as directed by the relevant authorities/engineer(s)/ architect.



		TOWER G																			
↘ 5TH FLOOR	# 36-05 TYPE H	# 36-06 TYPE G	# 36-07 TYPE F	# 36-08 TYPE F	# 36-09 TYPE G	# 36-10 TYPE H	# 36-11 TYPE E	# 36-12 TYPE E	# 36-13 TYPE E	# 36-14 TYPE E	# 36-15 TYPE E	# 36-01 TYPE G	# 36-02 TYPE G	# 36-03 TYPE F	# 36-04 TYPE F	15					
↘ 5TH FLOOR	# 35-05 TYPE H	# 35-06 TYPE G	# 35-07 TYPE F	# 35-08 TYPE F	# 35-09 TYPE G	# 35-10 TYPE H	# 35-11 TYPE E	# 35-12 TYPE E	# 35-13 TYPE E	# 35-14 TYPE E	# 35-15 TYPE E	# 35-01 TYPE G	# 35-02 TYPE G	# 35-03 TYPE F	# 35-04 TYPE F	15					
↘ 4TH FLOOR	# 34-05 TYPE H	# 34-06 TYPE G	# 34-07 TYPE F	# 34-08 TYPE F	# 34-09 TYPE G	# 34-10 TYPE H	# 34-11 TYPE E	# 34-12 TYPE E	# 34-13 TYPE E	# 34-14 TYPE E	# 34-15 TYPE E	# 34-01 TYPE G	# 34-02 TYPE G	# 34-03 TYPE F	# 34-04 TYPE F	15					
↘ 3RD FLOOR	# 33-05 TYPE H	# 33-06 TYPE G	# 33-07 TYPE F	# 33-08 TYPE F	# 33-09 TYPE G	# 33-10 TYPE H	# 33-11 TYPE E	# 33-12 TYPE E	# 33-13 TYPE E	# 33-14 TYPE E	# 33-15 TYPE E	# 33-01 TYPE G	# 33-02 TYPE G	# 33-03 TYPE F	# 33-04 TYPE F	15					
↘ 2ND FLOOR	# 32-05 TYPE H	# 32-06 TYPE G	# 32-07 TYPE F	# 32-08 TYPE F	# 32-09 TYPE G	# 32-10 TYPE H	# 32-11 TYPE E	# 32-12 TYPE E	# 32-13 TYPE E	# 32-14 TYPE E	# 32-15 TYPE E	# 32-01 TYPE G	# 32-02 TYPE G	# 32-03 TYPE F	# 32-04 TYPE F	15					
↘ 1ST FLOOR	# 31-05 TYPE H	# 31-06 TYPE G	# 31-07 TYPE F	# 31-08 TYPE F	# 31-09 TYPE G	# 31-10 TYPE H	# 31-11 TYPE E	# 31-12 TYPE E	# 31-13 TYPE E	# 31-14 TYPE E	# 31-15 TYPE E	# 31-01 TYPE G	# 31-02 TYPE G	# 31-03 TYPE F	# 31-04 TYPE F	15					
↘ 10TH FLOOR	# 30-05 TYPE H	# 30-06 TYPE G	# 30-07 TYPE F	# 30-08 TYPE F	# 30-09 TYPE G	# 30-10 TYPE H	# 30-11 TYPE E	# 30-12 TYPE E	# 30-13 TYPE E	# 30-14 TYPE E	# 30-15 TYPE E	# 30-01 TYPE G	# 30-02 TYPE G	# 30-03 TYPE F	# 30-04 TYPE F	15					
↘ 9TH FLOOR	# 29-05 TYPE H	# 29-06 TYPE G	# 29-07 TYPE F	# 29-08 TYPE F	# 29-09 TYPE G	# 29-10 TYPE H	# 29-11 TYPE E	# 29-12 TYPE E	# 29-13 TYPE E	# 29-14 TYPE E	# 29-15 TYPE E	# 29-01 TYPE G	# 29-02 TYPE G	# 29-03 TYPE F	# 29-04 TYPE F	15					
↘ 8TH FLOOR	# 28-05 TYPE H	# 28-06 TYPE G	# 28-07 TYPE F	# 28-08 TYPE F	# 28-09 TYPE G	# 28-10 TYPE H	# 28-11 TYPE E	# 28-12 TYPE E	# 28-13 TYPE E	# 28-14 TYPE E	# 28-15 TYPE E	# 28-01 TYPE G	# 28-02 TYPE G	# 28-03 TYPE F	# 28-04 TYPE F	15					
↘ 7TH FLOOR	# 27-05 TYPE H	# 27-06 TYPE G	# 27-07 TYPE F	# 27-08 TYPE F	# 27-09 TYPE G	# 27-10 TYPE H	# 27-11 TYPE E	# 27-12 TYPE E	# 27-13 TYPE E	# 27-14 TYPE E	# 27-15 TYPE E	# 27-01 TYPE G	# 27-02 TYPE G	# 27-03 TYPE F	# 27-04 TYPE F	15					
↘ 6TH FLOOR	# 26-05 TYPE H	# 26-06 TYPE G	# 26-07 TYPE F	# 26-08 TYPE F	# 26-09 TYPE G	# 26-10 TYPE H	# 26-11 TYPE E	# 26-12 TYPE E	# 26-13 TYPE E	# 26-14 TYPE E	# 26-15 TYPE E	# 26-01 TYPE G	# 26-02 TYPE G	# 26-03 TYPE F	# 26-04 TYPE F	15					
↘ 5TH FLOOR	# 25-05 TYPE H	# 25-06 TYPE G	# 25-07 TYPE F	# 25-08 TYPE F	# 25-09 TYPE G	# 25-10 TYPE H	# 25-11 TYPE E	# 25-12 TYPE E	# 25-13 TYPE E	# 25-14 TYPE E	# 25-15 TYPE E	# 25-01 TYPE G	# 25-02 TYPE G	# 25-03 TYPE F	# 25-04 TYPE F	15					
↘ 4TH FLOOR	# 24-05 TYPE H	# 24-06 TYPE G	# 24-07 TYPE F	# 24-08 TYPE F	# 24-09 TYPE G	# 24-10 TYPE H	# 24-11 TYPE E	# 24-12 TYPE E	# 24-13 TYPE E	# 24-14 TYPE E	# 24-15 TYPE E	# 24-01 TYPE G	# 24-02 TYPE G	# 24-03 TYPE F	# 24-04 TYPE F	15					
↘ 3RD FLOOR	# 23-05 TYPE H	# 23-06 TYPE G	# 23-07 TYPE F	# 23-08 TYPE F	# 23-09 TYPE G	# 23-10 TYPE H	# 23-11 TYPE E	# 23-12 TYPE E	# 23-13 TYPE E	# 23-14 TYPE E	# 23-15 TYPE E	# 23-01 TYPE G	# 23-02 TYPE G	# 23-03 TYPE F	# 23-04 TYPE F	15					
↘ 2ND FLOOR	# 22-05 TYPE H	# 22-06 TYPE G	# 22-07 TYPE F	# 22-08 TYPE F	# 22-09 TYPE G	# 22-10 TYPE H	# 22-11 TYPE E	# 22-12 TYPE E	# 22-13 TYPE E	# 22-14 TYPE E	# 22-15 TYPE E	# 22-01 TYPE G	# 22-02 TYPE G	# 22-03 TYPE F	# 22-04 TYPE F	15					
↘ 1ST FLOOR	# 21-05 TYPE H	# 21-06 TYPE G	# 21-07 TYPE F	# 21-08 TYPE F	# 21-09 TYPE G	# 21-10 TYPE H	# 21-11 TYPE E	# 21-12 TYPE E	# 21-13 TYPE E	# 21-14 TYPE E	# 21-15 TYPE E	# 21-01 TYPE G	# 21-02 TYPE G	# 21-03 TYPE F	# 21-04 TYPE F	15					
↘ 10TH FLOOR	# 20-05 TYPE H	# 20-06 TYPE G	# 20-07 TYPE F	# 20-08 TYPE F	# 20-09 TYPE G	# 20-10 TYPE H	# 20-11 TYPE E	# 20-12 TYPE E	# 20-13 TYPE E	# 20-14 TYPE E	# 20-15 TYPE E	# 20-01 TYPE G	# 20-02 TYPE G	# 20-03 TYPE F	# 20-04 TYPE F	15					
↘ 9TH FLOOR	# 19-05 TYPE H	# 19-06 TYPE G	# 19-07 TYPE F	# 19-08 TYPE F	# 19-09 TYPE G	# 19-10 TYPE H	# 19-11 TYPE E	# 19-12 TYPE E	# 19-13 TYPE E	# 19-14 TYPE E	# 19-15 TYPE E	# 19-01 TYPE G	# 19-02 TYPE G	# 19-03 TYPE F	# 19-04 TYPE F	15					
↘ 8TH FLOOR	# 18-05 TYPE H	# 18-06 TYPE G	# 18-07 TYPE F	# 18-08 TYPE F	# 18-09 TYPE G	# 18-10 TYPE H	# 18-11 TYPE E	# 18-12 TYPE E	# 18-13 TYPE E	# 18-14 TYPE E	# 18-15 TYPE E	# 18-01 TYPE G	# 18-02 TYPE G	# 18-03 TYPE F	# 18-04 TYPE F	15					
↘ 7TH FLOOR	# 17-05 TYPE H	# 17-06 TYPE G	# 17-07 TYPE F	# 17-08 TYPE F	# 17-09 TYPE G	# 17-10 TYPE H	# 17-11 TYPE E	# 17-12 TYPE E	# 17-13 TYPE E	# 17-14 TYPE E	# 17-15 TYPE E	# 17-01 TYPE G	# 17-02 TYPE G	# 17-03 TYPE F	# 17-04 TYPE F	15					
↘ 6TH FLOOR	# 16-05 TYPE H	# 16-06 TYPE G	# 16-07 TYPE F	# 16-08 TYPE F	# 16-09 TYPE G	# 16-10 TYPE H	# 16-11 TYPE E	# 16-12 TYPE E	# 16-13 TYPE E	# 16-14 TYPE E	# 16-15 TYPE E	# 16-01 TYPE G	# 16-02 TYPE G	# 16-03 TYPE F	# 16-04 TYPE F	15					
↘ 5TH FLOOR	# 15-05 TYPE H	# 15-06 TYPE G	# 15-07 TYPE F	# 15-08 TYPE F	# 15-09 TYPE G	# 15-10 TYPE H	# 15-11 TYPE E	# 15-12 TYPE E	# 15-13 TYPE E	# 15-14 TYPE E	# 15-15 TYPE E	# 15-01 TYPE G	# 15-02 TYPE G	# 15-03 TYPE F	# 15-04 TYPE F	15					
↘ 4TH FLOOR	# 14-05 TYPE H	# 14-06 TYPE G	# 14-07 TYPE F	# 14-08 TYPE F	# 14-09 TYPE G	# 14-10 TYPE H	# 14-11 TYPE E	# 14-12 TYPE E	# 14-13 TYPE E	# 14-14 TYPE E	# 14-15 TYPE E	# 14-01 TYPE G	# 14-02 TYPE G	# 14-03 TYPE F	# 14-04 TYPE F	15					
↘ 3TH FLOOR	# 13-05 TYPE H	# 13-06 TYPE G	# 13-07 TYPE F	# 13-08 TYPE F	# 13-09 TYPE G	# 13-10 TYPE H	# 13-11 TYPE E	# 13-12 TYPE E	# 13-13 TYPE E	# 13-14 TYPE E	# 13-15 TYPE E	# 13-01 TYPE G	# 13-02 TYPE G	# 13-03 TYPE F	# 13-04 TYPE F	15					
↘ 2TH FLOOR	# 11-05 TYPE H	# 11-06 TYPE G	# 11-07 TYPE F	# 11-08 TYPE F	# 11-09 TYPE G	# 11-10 TYPE H	# 11-11 TYPE E	# 11-12 TYPE E	# 11-13 TYPE E	# 11-14 TYPE E	# 11-15 TYPE E	# 11-01 TYPE G	# 11-02 TYPE G	# 11-03 TYPE F	# 11-04 TYPE F	15					
↘ 1TH FLOOR	# 10-05 TYPE H	# 10-06 TYPE G	# 10-07 TYPE F	# 10-08 TYPE F	# 10-09 TYPE G	# 10-10 TYPE H	# 10-11 TYPE E	# 10-12 TYPE E	# 10-13 TYPE E	# 10-14 TYPE E	# 10-15 TYPE E	# 10-01 TYPE G	# 10-02 TYPE G	# 10-03 TYPE F	# 10-04 TYPE F	15					
↘ 8TH FLOOR	# 09-05 TYPE H	# 09-06 TYPE G	# 09-07 TYPE F	# 09-08 TYPE F	# 09-09 TYPE G	# 09-10 TYPE H	# 09-11 TYPE E	# 09-12 TYPE E	# 09-13 TYPE E	# 09-14 TYPE E	# 09-15 TYPE E	# 09-01 TYPE G	# 09-02 TYPE G	# 09-03 TYPE F	# 09-04 TYPE F	15					
↘ 7TH FLOOR	# 08-05 TYPE H	# 08-06 TYPE G	# 08-07 TYPE F	# 08-08 TYPE F	# 08-09 TYPE G	# 08-10 TYPE H	# 08-11 TYPE E	# 08-12 TYPE E	# 08-13 TYPE E	# 08-14 TYPE E	MSE ROOM	# 08-01 TYPE G	# 08-02 TYPE G	# 08-03 TYPE F	# 08-04 TYPE F	14					
↘ 6TH FLOOR	# 07-05 TYPE H	# 07-06 TYPE G	# 07-07 TYPE F	# 07-08 TYPE F	# 07-09 TYPE G	# 07-10 TYPE H	# 07-11 TYPE E	# 07-12 TYPE E	# 07-13 TYPE E	# 07-14 TYPE E	# 07-15 TYPE E	# 07-01 TYPE G	# 07-02 TYPE G	# 07-03 TYPE F	# 07-04 TYPE F	15					
↘ TRANSFER BEAM																					
↘ 5TH FLOOR (FACILITIES) (PODIUM)	FACILITIES																FACILITIES				
↘ 4TH FLOOR	CAR PARK																CAR PARK				
↘ 3TH FLOOR	CAR PARK																CAR PARK				
↘ 2ND FLOOR	CAR PARK																CAR PARK				
↘ 1ST FLOOR	CAR PARK																CAR PARK				
↘ GROUND FLOOR	COMMERCIAL																COMMERCIAL				
↘ LOWER GROUND 1	CAR PARK																CAR PARK				
↘ LOWER GROUND 2	CAR PARK																CAR PARK				
↘ LOWER GROUND 3	CAR PARK																CAR PARK				
↘ LOWER GROUND 4	CAR PARK																CAR PARK				
																JUMLAH UNIT	449				

**NOTE:**

- Not to scale.
- The unit number is an indicative number only and does not represent the house numbering in the actual address.
- Unit numbers, plans, layouts and other information contained herein are intended to give a general indication of the proposed design only and are subject to change and/or amendments as may be required or as directed by the relevant authorities/engineer(s)/ architect.

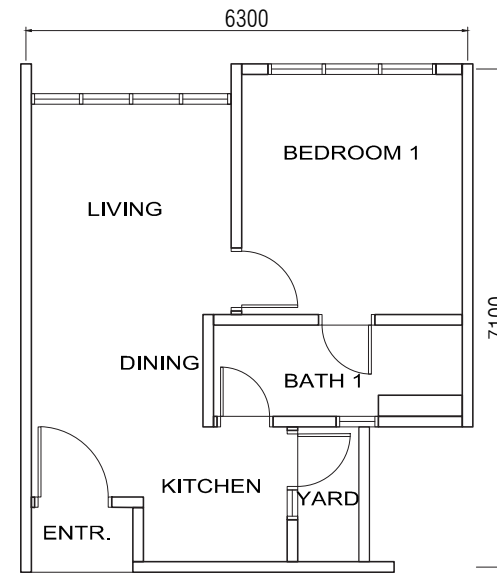
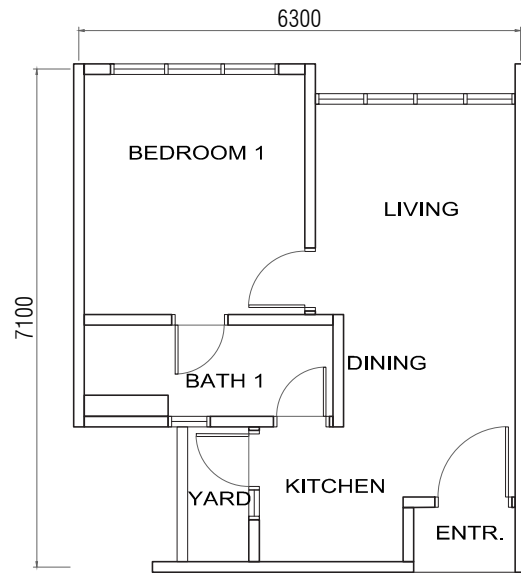
# UNIT PLAN

## TYPE E

- 1 Bedroom + 1 Bathroom
- 435 sq ft

### NOTE:

1. Not to scale. Mirror image. The unit areas, dimensions and layouts shown are approximate only and subject to final survey. Exterior areas may vary to suit site conditions.
2. Unit numbers, plans, layouts and other information contained herein are intended to give a general indication of the proposed design only and are subject to change and/or amendments as may be required or as directed by the relevant authorities/engineer(s)/ architect.



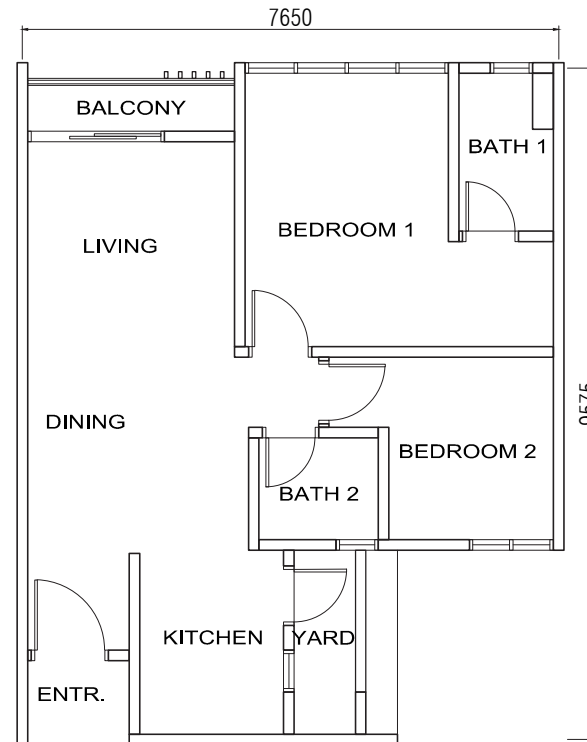
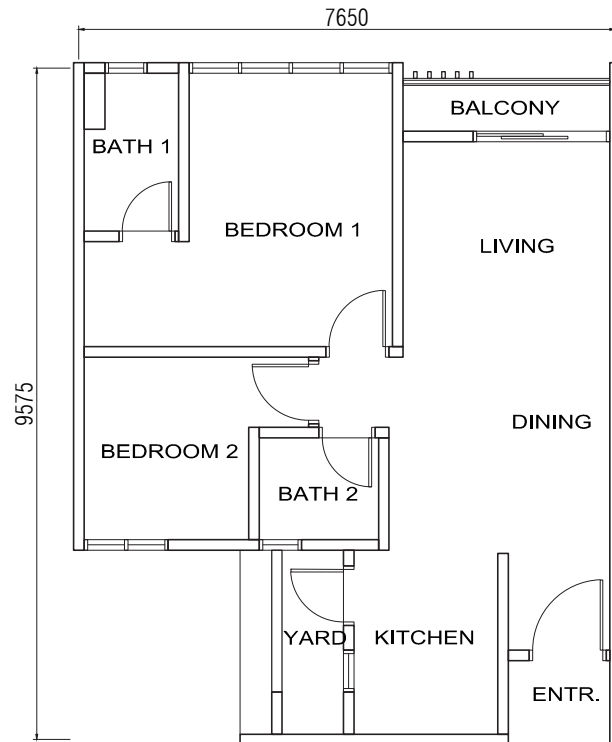
# UNIT PLAN

## TYPE F

- 2 Bedrooms + 2 Bathrooms
- 697 sq ft

**NOTE:**

1. Not to scale. Mirror image. The unit areas, dimensions and layouts shown are approximate only and subject to final survey. Exterior areas may vary to suit site conditions.
2. Unit numbers, plans, layouts and other information contained herein are intended to give a general indication of the proposed design only and are subject to change and/or amendments as may be required or as directed by the relevant authorities/engineer(s)/ architect.



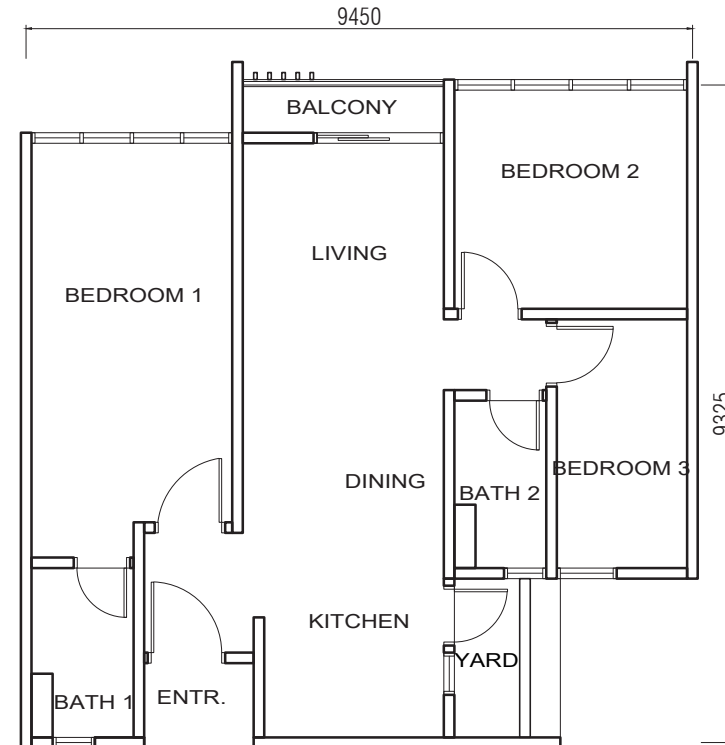
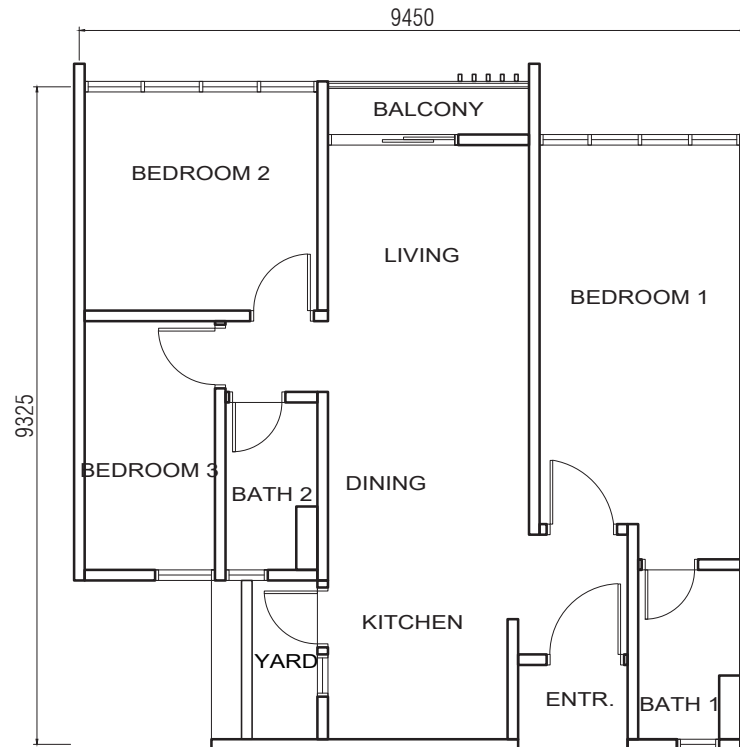
# UNIT PLAN

## TYPE G

- 3 Bedrooms + 2 Bathrooms
- 863 sq ft

### NOTE:

1. Not to scale. Mirror image. The unit areas, dimensions and layouts shown are approximate only and subject to final survey. Exterior areas may vary to suit site conditions.
2. Unit numbers, plans, layouts and other information contained herein are intended to give a general indication of the proposed design only and are subject to change and/or amendments as may be required or as directed by the relevant authorities/engineer(s)/ architect.



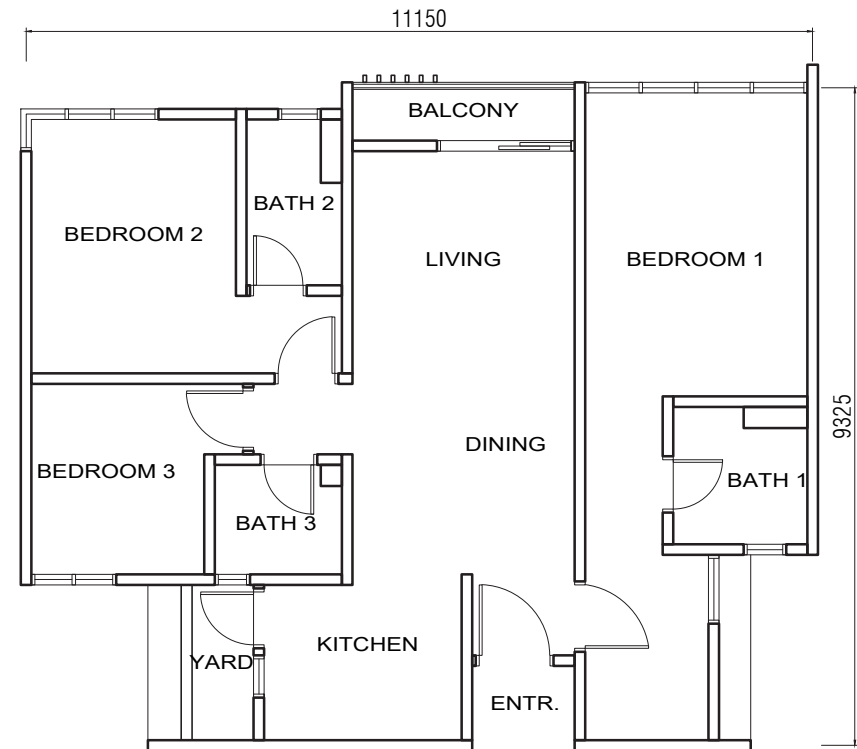
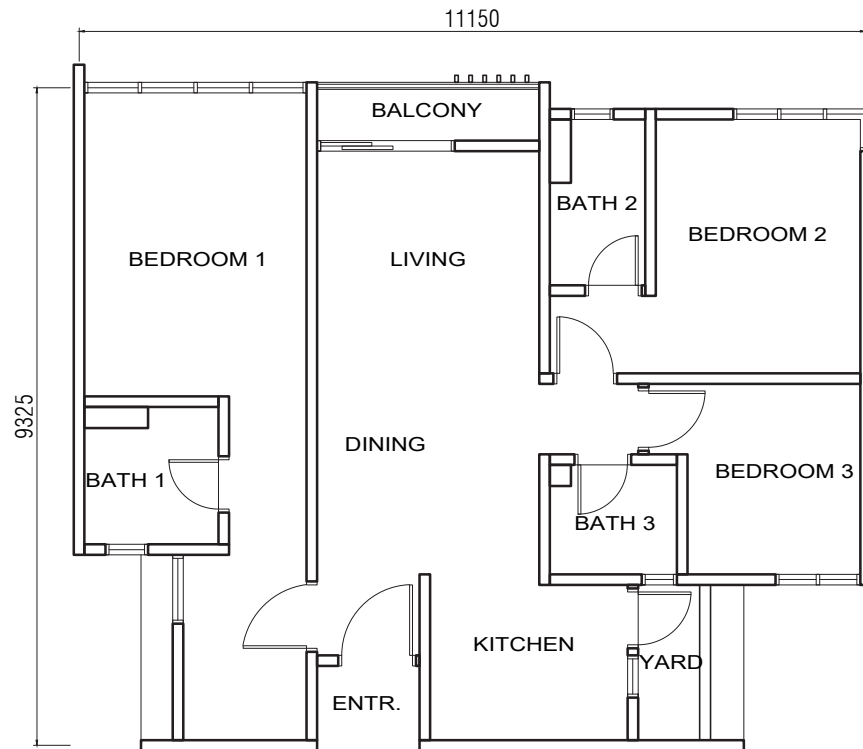
# UNIT PLAN

## TYPE H

- 3 Bedrooms + 3 Bathrooms
- 1,001 sq ft

**NOTE:**

1. Not to scale. Mirror image. The unit areas, dimensions and layouts shown are approximate only and subject to final survey. Exterior areas may vary to suit site conditions.
2. Unit numbers, plans, layouts and other information contained herein are intended to give a general indication of the proposed design only and are subject to change and/or amendments as may be required or as directed by the relevant authorities/engineer(s)/ architect.



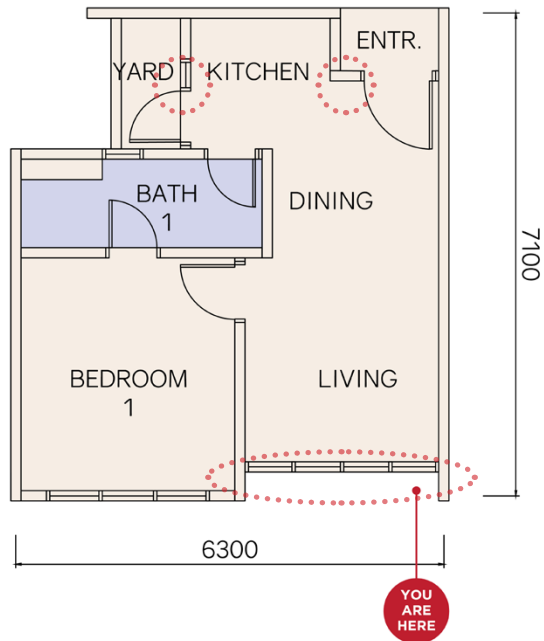
# SHOW UNIT

**Difference in terms of floor layout**  
The two unit types in comparison might have different built-up area and dimensions.

AVENUE  
RESIDENCES

**TYPE E** 435 SQ FT / 40.39 SQ M

1 1

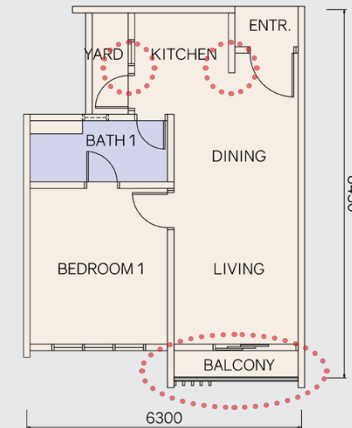


## VARIATION

TRELLIS  
RESIDENCES

**TYPE B** 510 SQ FT / 47.4 SQ M


1 1



**THIS SHOW UNIT HAS BEEN UPGRADED WITH INTERIOR TREATMENT AND IS SUBJECT TO VARIATION.**

For preview only. Subject to change and/or amendments as may be required or as directed by the relevant authorities/engineer(s)/ architect.

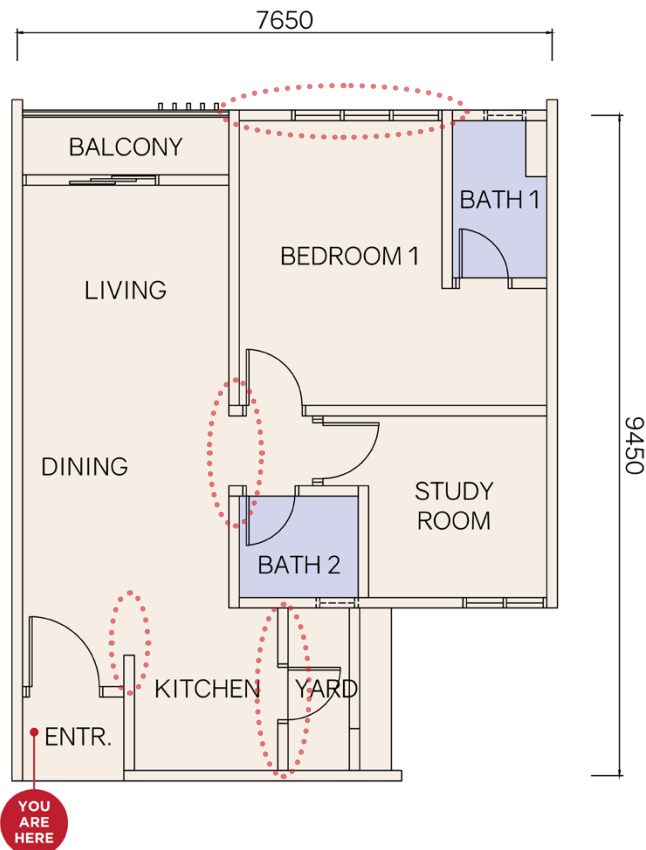
# SHOW UNIT

 **Difference in terms of floor layout**  
The two unit types in comparison might have different built-up area and dimensions.

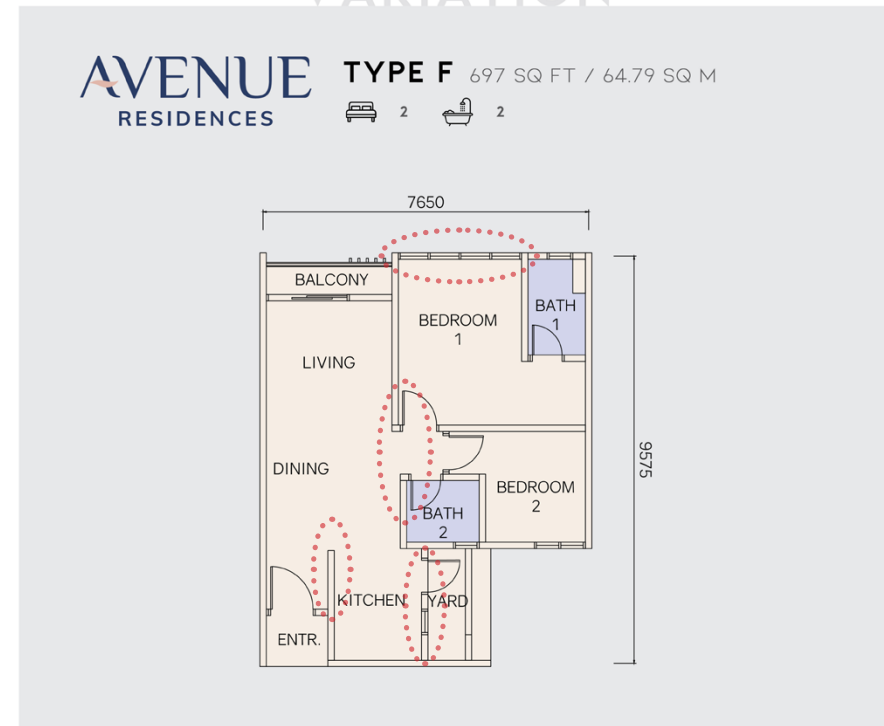
TRELLIS  
RESIDENCES

**TYPE D** 703 SQ FT / 65.3 SQ M

 1+1  2



## VARIATION



**THIS SHOW UNIT HAS BEEN UPGRADED WITH INTERIOR TREATMENT AND IS SUBJECT TO VARIATION.**

For preview only. Subject to change and/or amendments as may be required or as directed by the relevant authorities/engineer(s)/ architect.

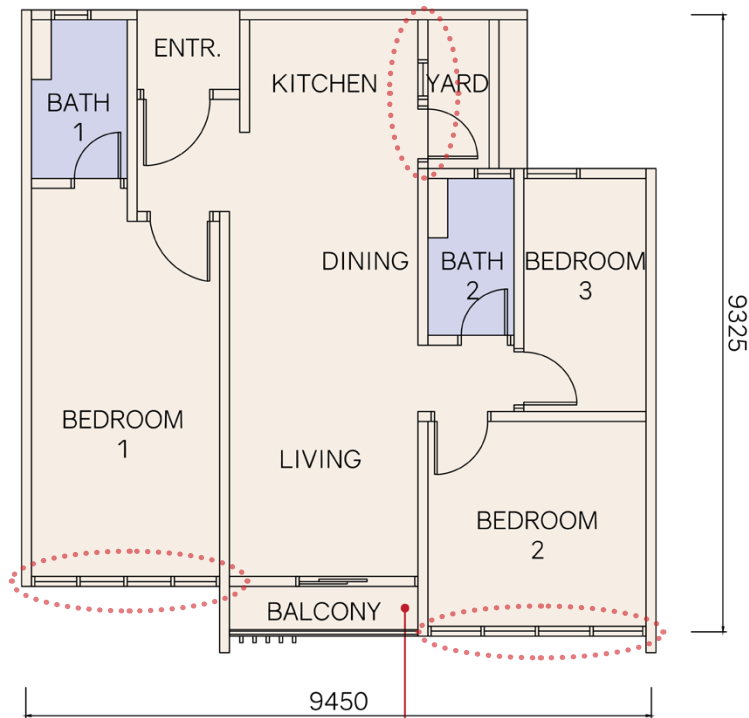
# SHOW UNIT

**Difference in terms of floor layout**  
The two unit types in comparison might have different built-up area and dimensions.

AVENUE  
RESIDENCES

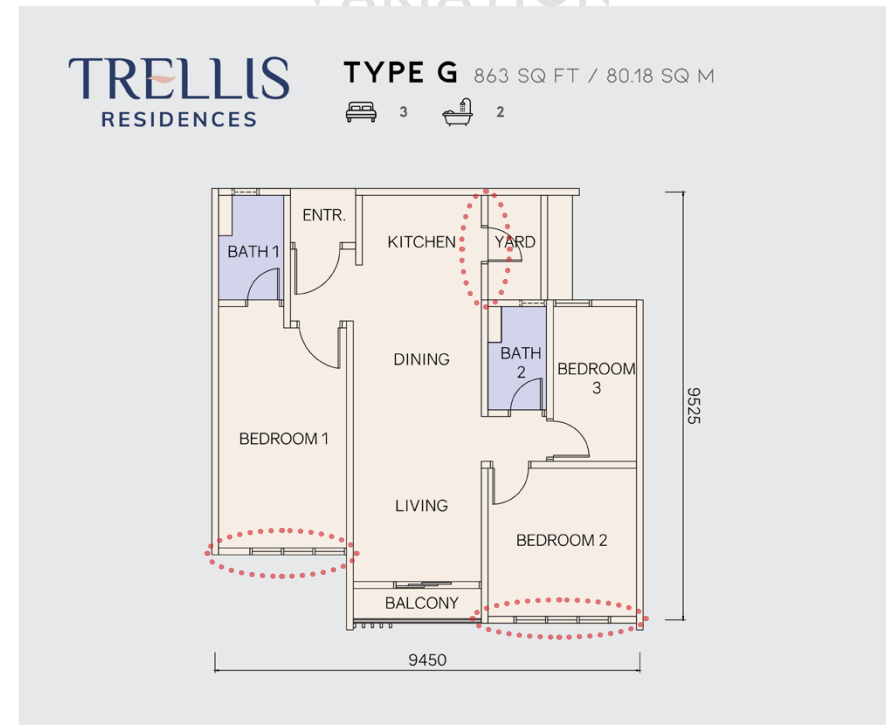
**TYPE G** 863 SQ FT / 80.17 SQ M

3 2



YOU  
ARE  
HERE

## VARIATION



**THIS SHOW UNIT HAS BEEN UPGRADED WITH INTERIOR TREATMENT AND IS SUBJECT TO VARIATION.**

For preview only. Subject to change and/or amendments as may be required or as directed by the relevant authorities/engineer(s)/ architect.

# BUILDING DESCRIPTION

For preview only. Subject to change.

## Structure

Reinforced Concrete Frame

## Wall

Reinforced Concrete Wall / Brickwall / Light Weight Block  
(Where Applicable)

## Roof

Reinforced Concrete Flat Roof

## Ceiling

Skim Coat / Plaster Ceiling Board with Emulsion Paint  
(Where Applicable)

## Doors

Metal Door Frame with Wooden Door

## Windows

Aluminium Frame Glass Window

## Lockset

Selected Quality Locksets

## Floor Finishes

Tiles

## Wall Finishes

- Plastering / Skim Coat With Emulsion Paint
- Weather Resistant Paint on External Wall
- Full Height Tiles at All Bathroom
- 1500mm Height Tiles at Selected Kitchen Area

	Type E	Type F	Type G	Type H
<b>Sanitary Fittings</b>				
Kitchen Sink	1	1	1	1
Sitting W/C	1	2	2	3
Wash Hand Basin	1	2	2	3
Shower Rose	1	2	2	3
Tap	2	3	3	4
<b>Electrical Fittings</b>				
Lighting Point	9	11	14	16
Fan Point	2	3	4	4
Power Point (13A)	11	13	21	21
Water Heater Power Point	1	2	2	3
Air-cond Power Point	2	3	4	4
Door Bell Point	1	1	1	1
SMATV Point	2	2	3	3
Distribution Board	1	1	1	1
Fiber Wall Socket	1	1	1	1
Power Point (15A)	1	1	1	2

UPDATED 16 MAY 2023.

## FOR MALAYSIAN PURCHASERS

# HOME PACKAGE

**NOTE:** Any models of furniture/ electrical appliances provided are up to the vendor's discretion and do not form part of any contract or warranty.

Item Description	TYPE			
	E	F	G	H
Rebate	8%	8%	8%	8%
Move-in Bonus	2%	2%	2%	2%
<b>Furniture/ Electrical Appliances</b>	1. Free Kitchen Cabinet 2. Free Cooker Hood & Hob	1. Free Kitchen Cabinet 2. Free Cooker Hood & Hob	1. Free Kitchen Cabinet 2. Free Cooker Hood & Hob	1. Free Kitchen Cabinet 2. Free Cooker Hood & Hob
<b>Standard Package</b>	1. Free Legal Fees on SPA & LA 2. Free Stamp Duty on Loan Disbursement 3. Free 1 Year Shuttle Bus Service to Johor Bahru CIQ Complex			

## FOR FOREIGN PURCHASERS

# HOME PACKAGE

**NOTE:** Any models of furniture/ electrical appliances provided are up to the vendor's discretion and do not form part of any contract or warranty.

Item Description	TYPE		
	F	G	H
Rebate	5%	5%	5%
<b>Furniture/ Electrical Appliances</b>	1. Free Kitchen Cabinet 2. Free Cooker Hood & Hob	1. Free Kitchen Cabinet 2. Free Cooker Hood & Hob	1. Free Kitchen Cabinet 2. Free Cooker Hood & Hob
<b>Standard Package</b>	1. Free Legal Fees on SPA & LA 2. Free Stamp Duty on Loan Disbursement 3. Free 1 Year Shuttle Bus Service to Johor Bahru CIQ Complex		

